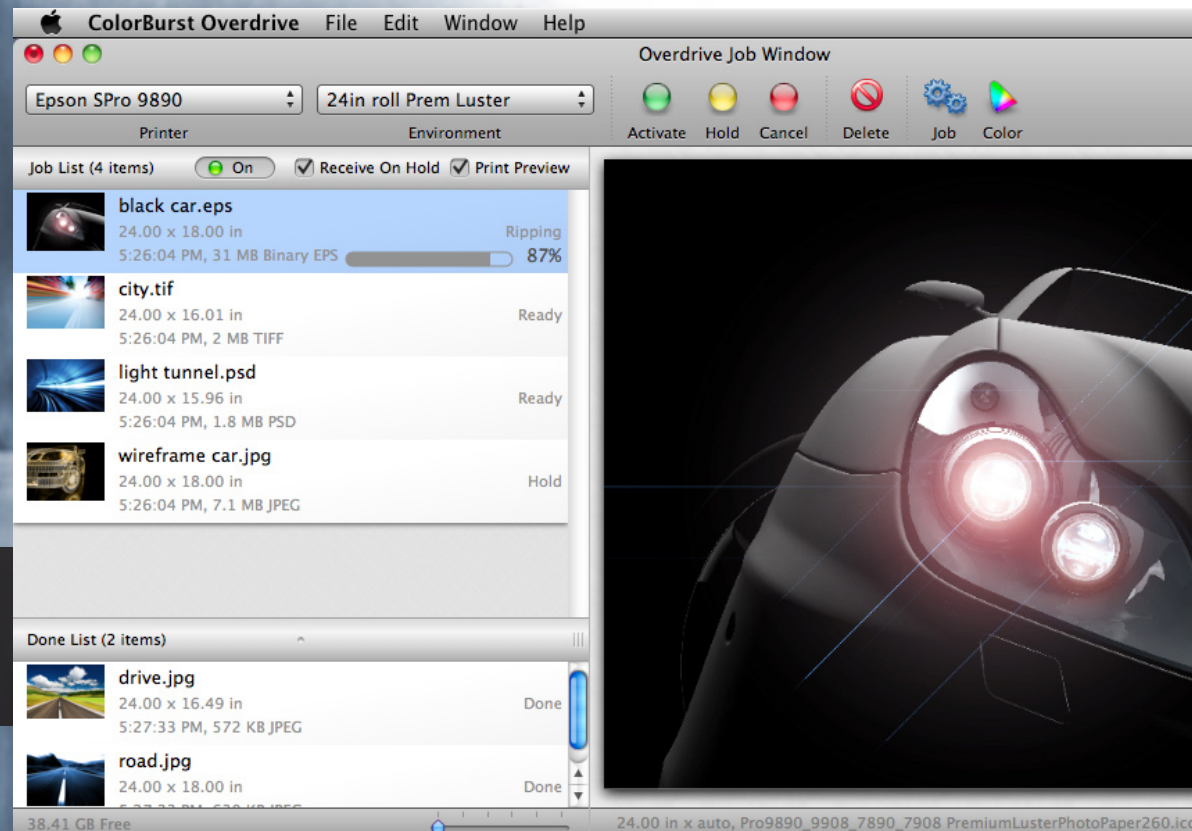


ColorBurst[®] overdrive version 2

Introducing ColorBurst Overdrive 2.0
a 64-bit RIP server for Mac OS X

THE FUTURE OF PROFESSIONAL INKJET PRINTING



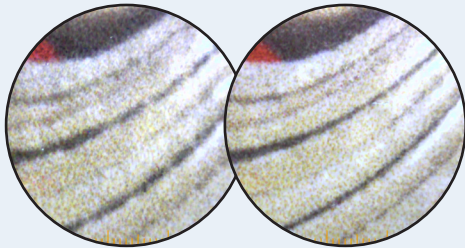
It's time to redefine your expectations of RIP software for professional inkjet printing. Complicated color management workflows and tedious ICC profiling are no longer necessary to get high-end print quality and accurate color proofs. Overdrive 2.0 works with your printer's driver and RGB paper profiles to make accurate color both automatic and effortless—

PREPARE TO BE AMAZED.

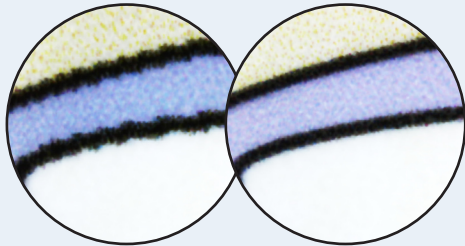
COMPARE ACTUAL INKJET PRINTS AT 10X MAGNIFICATION

printed using the printer
driver at 2880 Finest Detail
from Adobe® Illustrator CS5

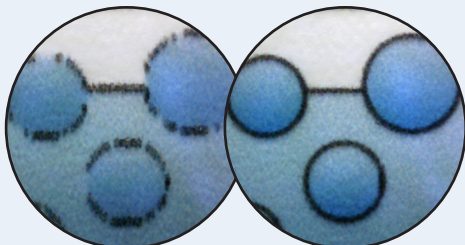
printed with
Overdrive 2



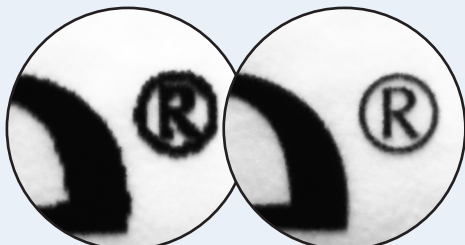
Photographic details are sharp



Vector art is smooth



Fine lines are solid



Even superscript type is clean and sharp

ColorBurst® overdrive

version 2

Overdrive processes your files and handles color in ways your print driver and applications can't. With Overdrive you can print documents with elements in different color spaces (CMYK, RGB, and grayscale all in one document), print complex transparencies, match Pantone colors without trial and error, and even get matching color on glossy and matte papers. Overdrive saves all of your print settings in an Environment that can be reloaded in a single step.

NEW - Faster processing

- Completely rewritten as a 64-bit Cocoa application for Mac OS X 10.6 and later
- Processing is significantly faster due to effective use of multi-core processors
- RIP times reduced up to 90% vs. Overdrive 1 (*results may vary*)



Support for any brand printer

- Epson, Canon, HP, and more
- Requires a driver for Mac OS 10.6+, ability to turn off color management provides optimal results

Black Point Compensation

- Adobe black point compensation built-in
- Output matches Adobe Photoshop exactly

PANTONE Color Matching

- Overdrive uses ColorBurst AutoSpot™ technology to automatically match Pantone colors

Output ICC Profiles

- Overdrive uses RGB output profiles
- Overdrive can use any paper manufacturer's RGB ICC profiles

Input ICC Profiles

- Separate settings for RGB, CMYK, and grayscale images with four different rendering intents
- Embedded profiles can be used

Adaptive to your workflow

- Files and folders can be opened directly or dragged into the Overdrive Job Manager window
- Send files to the Overdrive Hot Folder locally or across a network
- Print directly from image-editing and layout applications, such as Photoshop, InDesign, and Illustrator
- Jobs can be reordered, deleted, or placed on hold to be processed later

Overdrive 2 RIP Server Pricing

For printers up to 17" wide	\$595
For printers up to 24" wide	\$895
For printers up to 44" wide	\$1,195
For printers up to 64" wide	\$1,395

Take Overdrive 2 for a test drive

- Download a 15-day demo of the full version of Overdrive 2 (no limitations or demo marks)
- Demo available at www.overdriverip.com

For more information, visit www.overdriverip.com or contact sales@overdriverip.com.