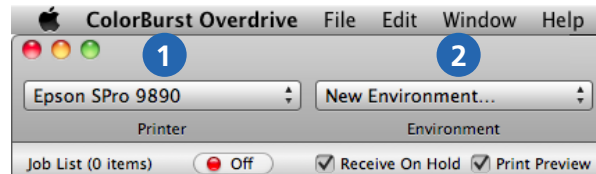


Quick Start Guide

Welcome to ColorBurst Overdrive. Before printing, you'll need to create a new Environment. An Environment saves all of Overdrive's settings for a printer and paper combination so you'll only have to set them once. The best way to use Overdrive is to make a new Environment for each type/size of paper you use. After your Environments are saved, you can easily switch between Environments whenever you change paper to recall all of your settings. This guide walks through creating an Environment and printing.

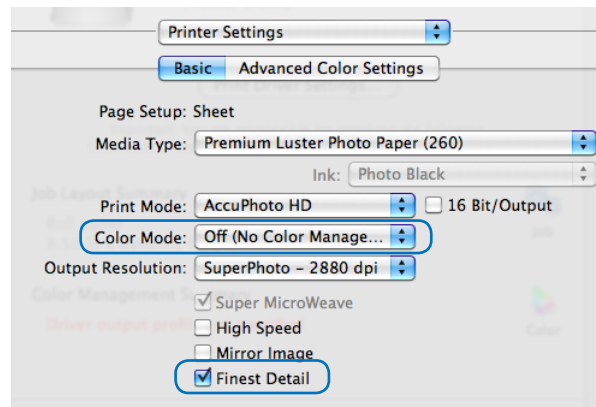
BUILD AN ENVIRONMENT

CREATE A NEW ENVIRONMENT



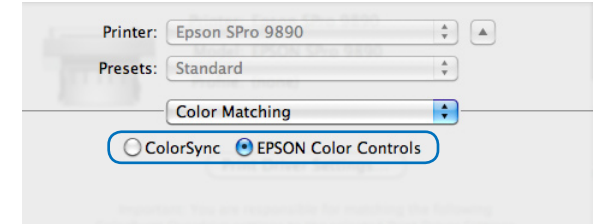
1. Select your printer in the Printer list.
2. Select New Environment.

PRINTER: DISABLE COLOR MANAGEMENT



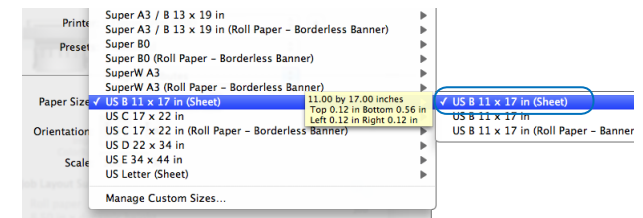
- Look for a master setting, such as "Color Mode" that can be set to "Off" or "No color management."
- If no master control exists, look for individual color settings that can be turned off.
- If your driver's color management can not be turned off, you can still use Overdrive 2 by setting a ColorSync profile in the next step.
- Be sure to select the Finest Detail setting after all changes are made—some changes may set Finest Detail off by default.

PRINTER: COLORSYNC



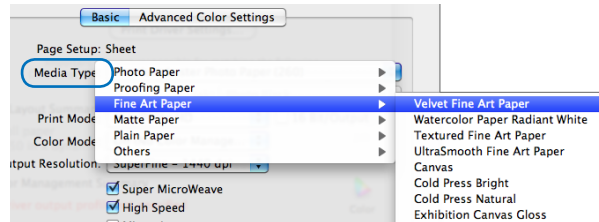
- If you were able to disable Color Management, select the vendor/printer settings instead of ColorSync.
- If your driver's color management can not be turned off, select ColorSync to load a profile. If you are using a custom RGB paper profile, load it here; otherwise select ColorBurst WideGamut_RGB.

PRINTER: PAPER SIZE (SHEET/ROLL, BORDERLESS)



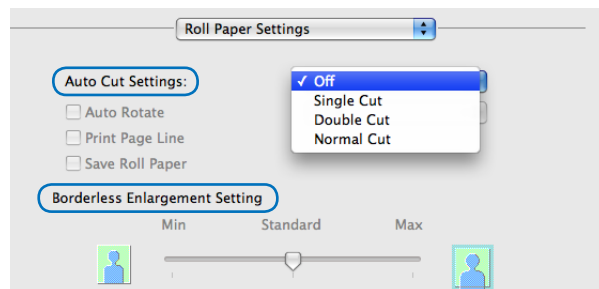
In the Page Attributes settings select a paper size for your media type that matches the paper you are using. Some printers have paper sizes indicating sheet, roll, and borderless options—be sure to select the correct paper size for how you intend to print. If you hover over the paper size, a yellow box with the exact dimensions and printer margins will appear.

PRINTER: SELECT A MEDIA TYPE



Locate the Media Type menu and select the paper you are using, or select a media type similar to your paper thickness. If you plan to use an ICC profile from your paper manufacturer, select the media type specified by your paper manufacturer.

PRINTER: CUT/BORDERLESS (ROLL ONLY)



If you are using roll media, set your driver's cut settings for roll and/or borderless printing.

PRINTER: CLICK OK TO CONTINUE

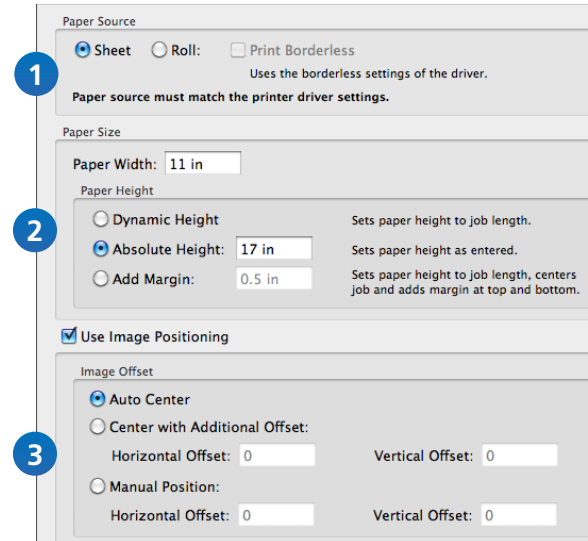
When you are finished setting your printer settings, click the OK button to close the Printer settings portion of the New Environment dialog.

CLICK JOB BUTTON TO CONTINUE

Click the Job button to set Job settings.



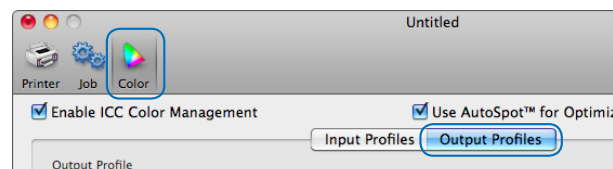
JOB: OVERDRIVE PAGE SETTINGS



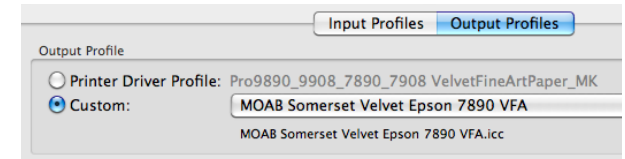
1. Select Sheet or Roll to match the Printer settings. If you selected a Borderless roll paper, select the Print Borderless checkbox.
2. Type in the width of your paper. For sheet, type in the Absolute Height of your paper. For roll, select Dynamic Height to print to the length of an image, or type in an Absolute Height to tell a roll to feed/cut to a certain length.
3. If you want to center your images, click the Use Image Positioning checkbox to select Auto Center.

CLICK COLOR BUTTON TO CONTINUE

Click the Color button at the top of the dialog and select the Output Profiles tab.



COLOR: OUTPUT ICC PROFILE

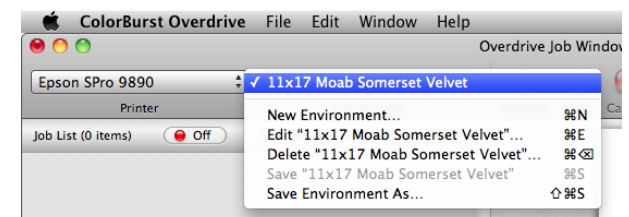


- In many cases, your Printer Driver Profile will be selected for you by the Media Type you selected in the Printer Settings. If the Printer Driver Profile name is shown in gray and looks okay, you do not need to change anything.
- If the name is shown in red as missing or a mismatch, or you want to use a custom RGB paper profile, select Custom and choose your profile from the list.
- If your driver's color management can not be turned off and selected a ColorSync profile, select Custom and select same profile here (either your custom profile or ColorBurst WideGamut_RGB).

CLICK SAVE AS

Click the Save As button to save your new Overdrive environment. It is helpful to include specific settings in the Environment name, such as paper size, paper type, roll, borderless, etc.

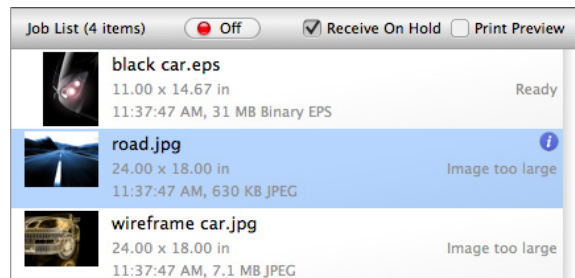
Once your environment is saved it will appear in the Environments pulldown menu in the Overdrive Job Manager.



JOB LIST

ADD FILES TO THE JOB LIST

There are several ways to add files to the Job List.



Open

Select File > Open to add files to the Job List.

Drag and drop

You may drag files from the desktop, any local folder, or any networked folder to the Job List.

Copy files to the Overdrive Hot Folder

Overdrive scans the Hot Folder for files and moves them immediately into the Job List for printing.

Any file placed in Macintosh HD/Applications/Overdrive/Hot Folder will be deleted from the folder after it is placed in the Job List.

SELECT AND MOVE FILES

Click a file to select it in the Job List. Click and drag to select multiple files, or hold the shift key or command key. To move a file or files in the list, click and hold the file until it becomes movable.

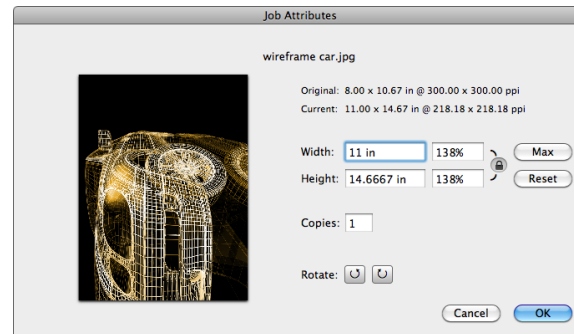
IMAGE TOO WIDE, TOO LONG, OR TOO LARGE

These images will need to be scaled before printing. Click the **i** button or double-click a file to scale in the Job Attributes dialog.

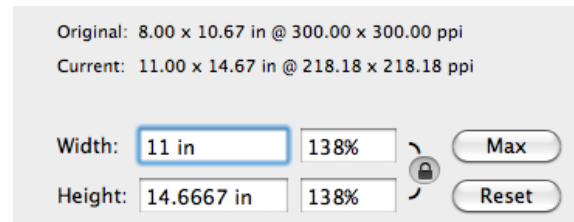
SCALE AND ROTATE

JOB ATTRIBUTES

Click the **i** button or double-click a file in the Job List to open the Job Attributes for that file.



SCALE



Type in a width, height, or percentage to scale the file. The Max button scales the file to the largest print size based on a minimum print resolution of 100 ppi. Click Reset to set the file to 100% (original size). To scale width and height independently, deselect the lock button.

NUMBER OF COPIES

Type in the number of copies to print. You will see the number of copies displayed in the Job List.

ROTATE

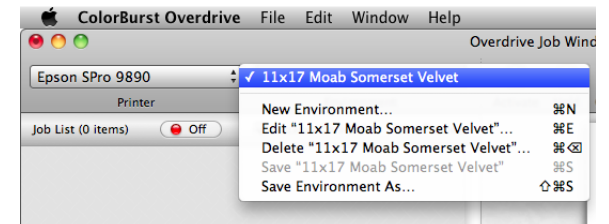
The rotate buttons turn the file counterclockwise or clockwise by 90°, as shown in the preview.



PRINT

SELECT YOUR PRINTER AND ENVIRONMENT

Begin by selecting your printer and Environment in Overdrive.

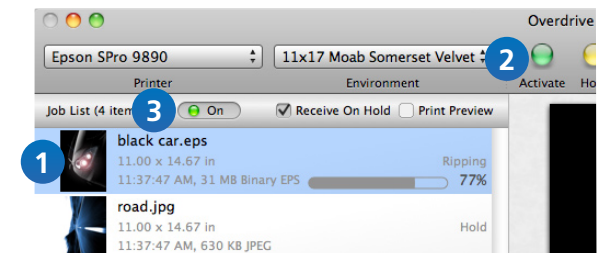


PRINTER "READY" AND PAPER LOADED

Before printing, go to your printer and make sure:

- the printer is plugged in and powered on;
- the printer has a "Ready" status at the printer's front control panel;
- paper that matches your Overdrive environment is properly loaded in the printer.

FILE "READY" AND RIP ON



1. Select the job(s) you want to print in the Job List.
2. Click the green Activate button in the toolbar to change the status from Hold to Ready.
3. Turn the RIP button On to start printing.

Files move to the Done list after printing. To reprint a file, click and hold to move the file to the Job List.